

## **Elderly and robots go well together**

Jodie Dame

U907083

2001268

[j.dame@tilburguniversity.edu](mailto:j.dame@tilburguniversity.edu)

### **Original paper:**

Robots Humanize Care – Moral Concerns Versus Witnessed Benefits for the Elderly

### **Reference for the original paper**

Van Kemenade, M. A., Konijn, E. A., & Hoorn, J. F. (2015, January). Robots humanize care – Moral concerns versus witnessed benefits for the elderly. In *Proceedings of the International Conference on Health Informatics* (pp. 648-653). SCITEPRESS-Science and Technology Publications, Lda.

### **Link to original paper online**

<https://www.scitepress.org/Papers/2015/52877/52877.pdf>

### **Project created for the class:**

Visual Thinking and Composition, Winter 2020

Tilburg University, Department of Communication and Cognition

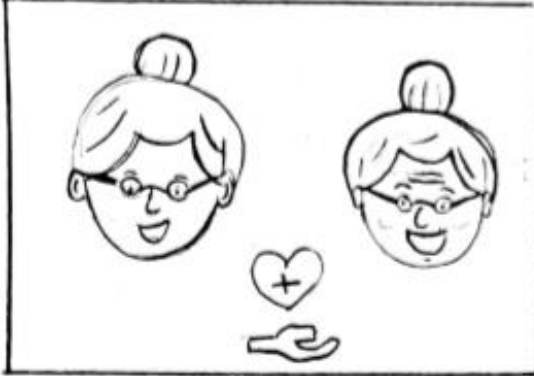
### **Instructor:**

Neil Cohn

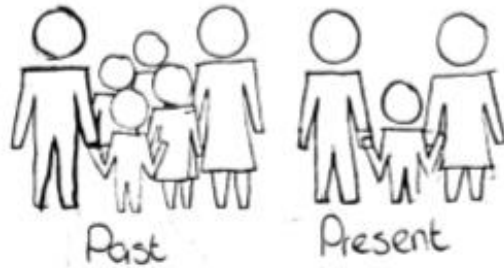
[neilcohn@visuallanguagelab.com](mailto:neilcohn@visuallanguagelab.com)

[www.visuallanguagelab.com](http://www.visuallanguagelab.com)

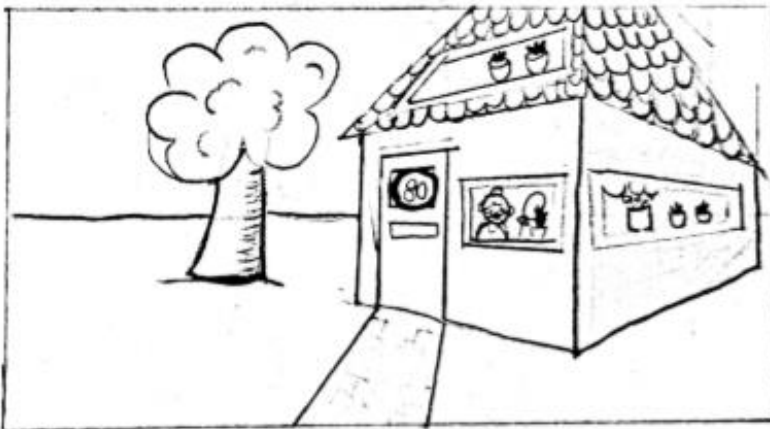
People live longer than ever before.



At the same time, family size in Europe decreases (Van Kemenade, Konijn, and Hoorn, 2015).



There are also severe budget cuts



I cannot do everything on my own. Can anyone help me?

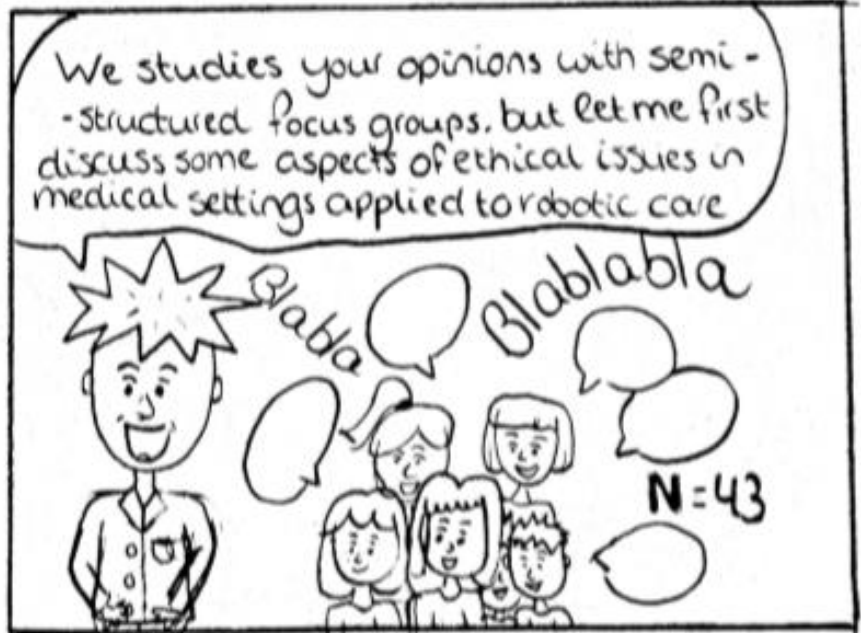
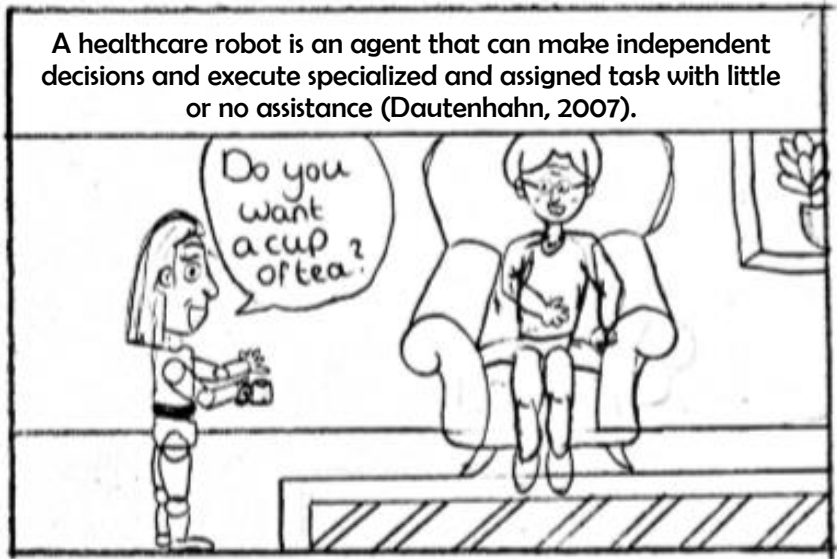
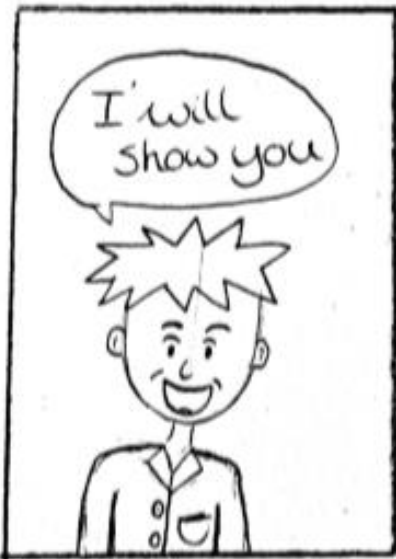
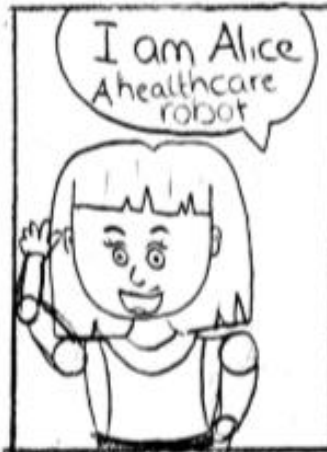


Who is going to take care of her?



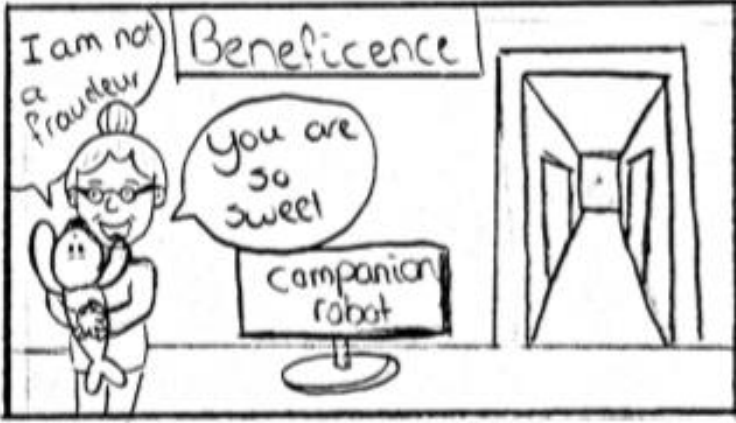
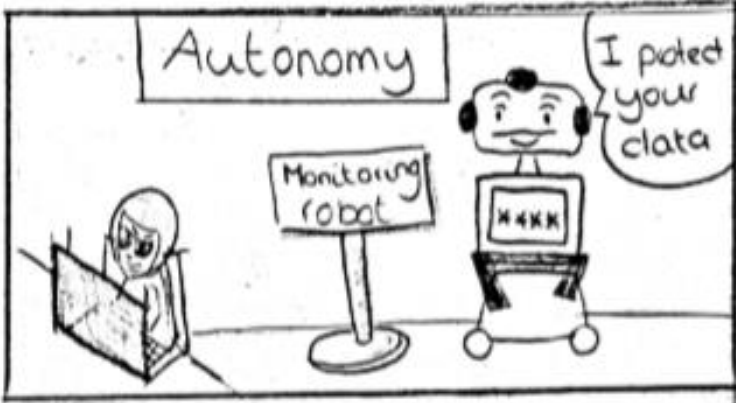
Maybe I can help





**Ethical principles in medicine:**

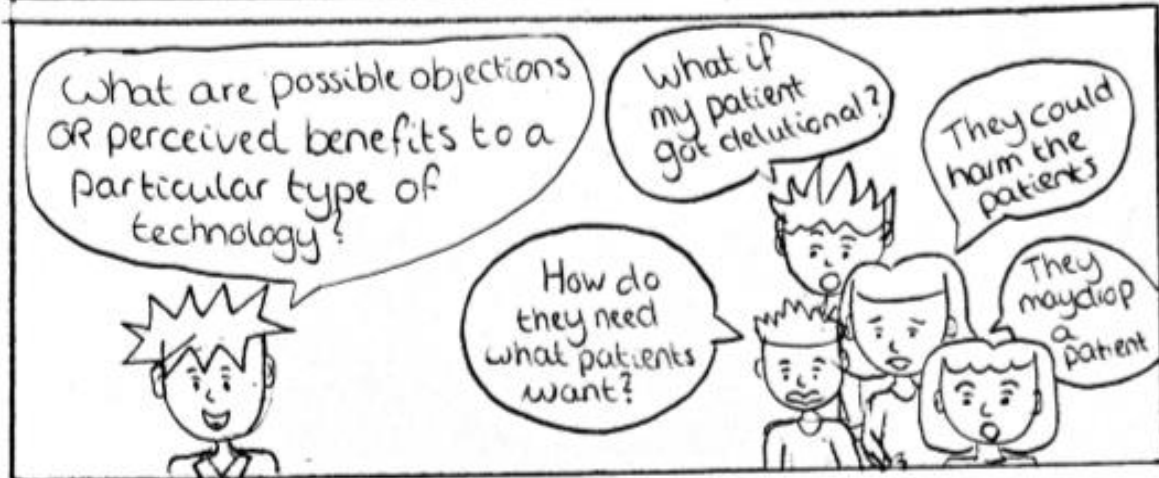
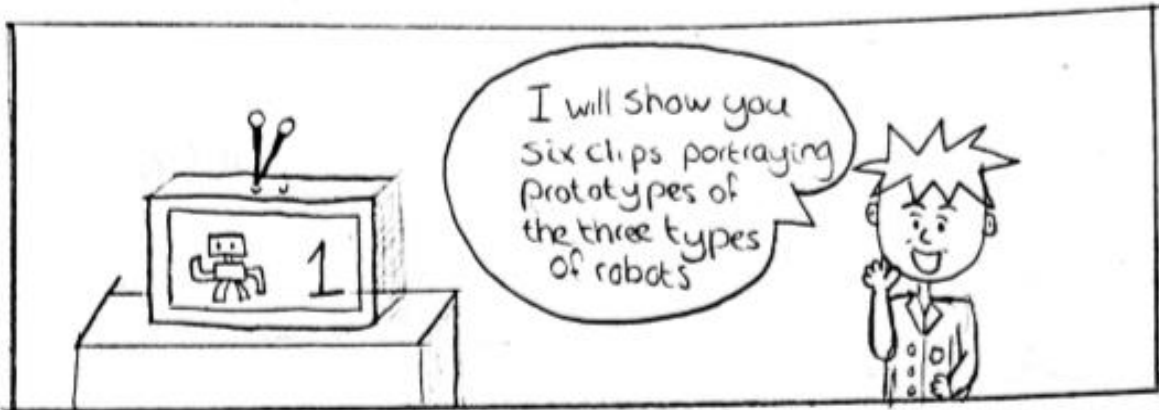
1. **Beneficence:**  
Act in the best interest of the patient
2. **Non-maleficence:**  
Before all else, do not harm the patient
3. **Autonomy:**  
The patient is able to make uniformed decisions about care
4. **Justice:**  
Medicine and attention need to be fairly distributed



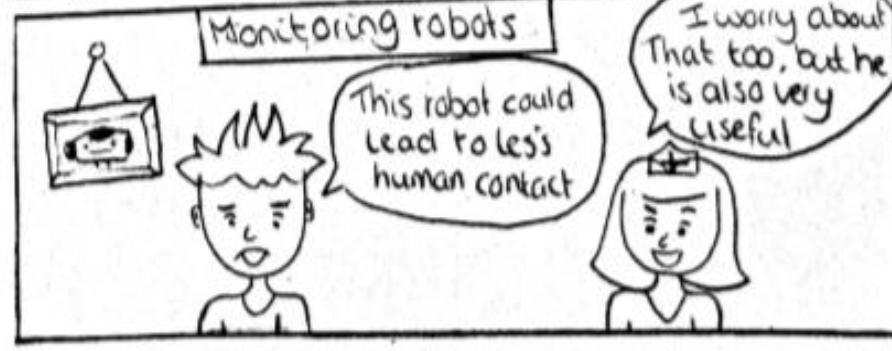
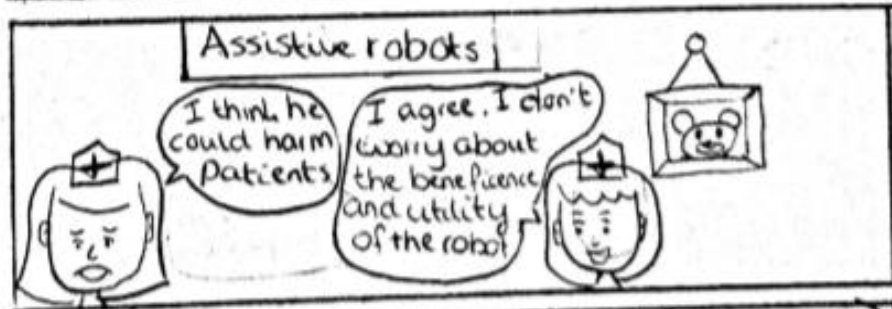
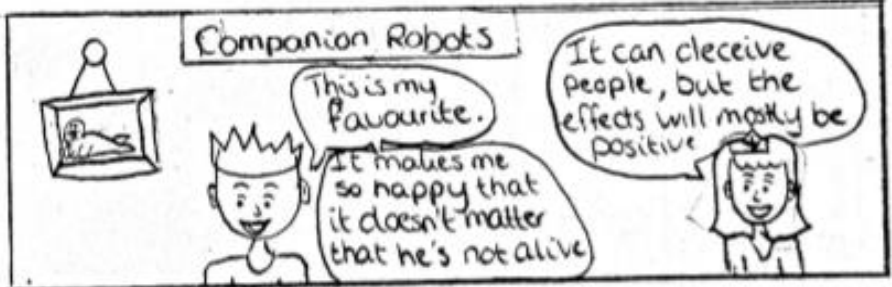
Back to the focus groups

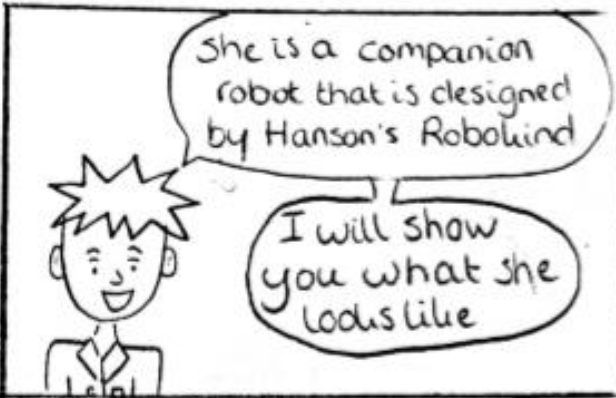
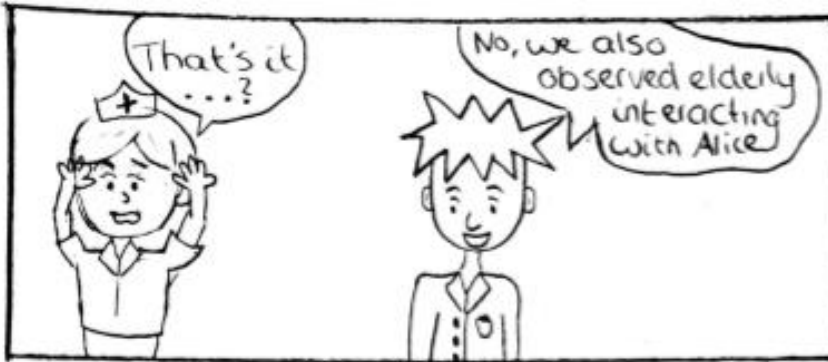


○ Age: 18 - 67  
○ Recruited in:  
• 4 nursing homes  
• 2 extra mural organisations  
○ People in focus groups:  
• 6 - 10

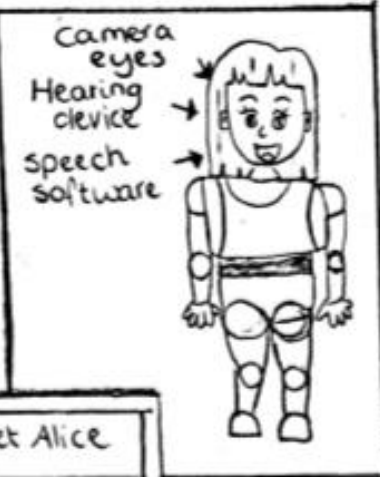


**RESULTS**



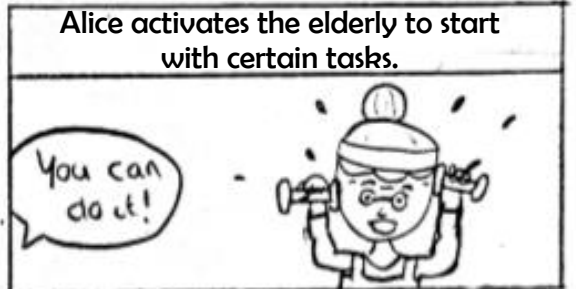
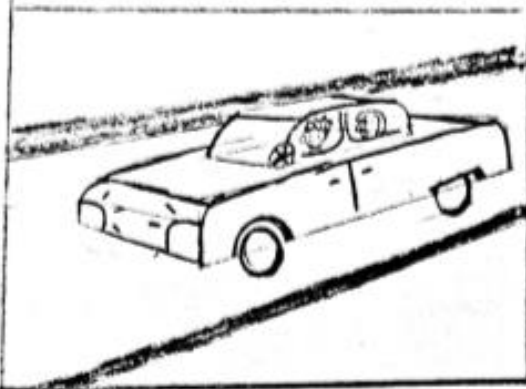


The hearing devices allow her to listen. Software allows her to talk and her camera-eyes allow her to follow and respond to others.





The camera-eyes of Alice record the conversations with the elderly as seen from her perspective.



Alice activates the elderly to start with certain tasks.

Alice cannot walk and sometimes she produces speech errors.

